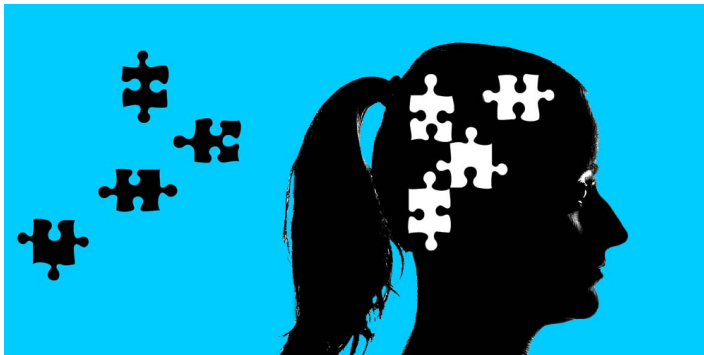


PSYCHOLOGY (BS)



This program was approved for students entering the university in the Summer 2019–Spring 2020 catalog year. For more information about catalog year, go to Catalog Year Information (<http://catalog.louisville.edu/undergraduate/university-wide-unit-specific-policies/catalog-year>).

Bachelor of Science in Psychology

Unit: College of Arts and Sciences (AS) (<http://www.louisville.edu/a-s>)

Department: Psychological and Brain Sciences (<http://louisville.edu/psychology>)

Academic Plan Code(s): PSYCBS

Program Information

This degree program is designed to accommodate the needs of majors who intend to pursue careers health or science fields and includes most of the required course work for a pre-med curriculum. This program requires a demanding sequence of supporting classes in biology, chemistry, physics, mathematics beyond the introductory level, as well as increased hours of electives in the major.

Completion of this degree requires work to be submitted for the department's Learning Outcomes Measurement. For details, contact the department.

Degree Summary

Code	Title	Hours
	General Education Requirements (http://catalog.louisville.edu/undergraduate/general-education-requirements) ¹	31
	College/School Requirements	13-15
	Program/Major Requirements ¹	75-77
	Minimum Total Hours	121

¹ Students earning the BS in Psychology will satisfy at least 10 hours of General Education Requirements by courses defined by the program. Students who take MATH 205 and also apply it to satisfy the Quantitative Reasoning requirement will satisfy 14 hours. In either case, students who satisfy General Education Requirements by courses defined by the program will require additional electives to complete the minimum hours for the degree.

Specific coursework information can be found on the Degree Requirements tab.

Departmental Admission Requirements

Admission to the major in Psychology requires:

1. Completion of PSYC 201 with a minimum grade of C;
2. Completion of MATH 111 or higher level Math course;
3. Completion of PSYC 301 (or department-approved substitute) with a minimum grade of C;
4. Completion of 30 hours of degree-applicable credit with a minimum grade point average of 2.0; and
5. A minimum grade point average of 2.0 in Psychology.

The Application for Major form can be found on the Arts & Sciences Advising Center website (<http://louisville.edu/artsandsciences/advising/apply>).

General Education Requirements

Code	Title	Hours
	General Education Requirements (http://catalog.louisville.edu/undergraduate/general-education-requirements) [*]	31

The following courses are required by the program and can satisfy the respective General Education Requirement:

PSYC 201	Introduction to Psychology - SB
BIOL 240	Unity of Life - S
CHEM 201	General Chemistry I - S
CHEM 207	Introduction to Chemical Analysis I - SL
MATH 205	Calculus I - QR ⁸

*All degrees require the completion of the University-wide General Education Program (link provided above). Some General Education requirements may be met in the requirements for the major or supporting coursework, in which case additional electives may be required to complete the minimum hours for the degree.

College/School Requirements

Code	Title	Hours
Arts & Sciences Requirements		
GEN 100	Student Success Center Orientation	1
or GEN 101	Arts and Sciences Orientation	
	Foreign Language ¹	6-8
	Electives in Humanities or Natural Sciences at 300+level ²	6
	WR - two approved courses at the 300 level or above ³	
Minimum Total Hours		13-15

Program/Major Requirements

Code	Title	Hours
Department of Psychological and Brain Sciences		
PSYC 201	Introduction to Psychology - SB ⁴	3
PSYC 301	Statistics for Psychology ((or department-approved substitute)) ⁵	3
PSYC 302	Research Methods for Psychology	3
Core requirements		12
PSYC 305	Brain and Behavior	
PSYC 306	Life Span Developmental Psychology	
PSYC 307	Cognitive Processes	
PSYC 308	Abnormal Psychology	

Psychology CUE course (see list below)	3
PSYC Electives ^{6,7}	18
Supporting Courses	
BIOL 240 Unity of Life - S	3
BIOL 242 Diversity of Life - S	3
BIOL 244 Principles of Biology Laboratory - SL	2
CHEM 201 General Chemistry I - S	3
CHEM 202 General Chemistry II - S	3
CHEM 207 Introduction to Chemical Analysis I - SL	2
& CHEM 208 Introduction to Chemical Analysis II - SL	
CHEM 209 Introduction to Chemical Analysis III	1
MATH 205 Calculus I - QR ⁸	4
PHYS 221 Fundamentals of Physics I - S	4
& PHYS 223 Fundamentals of Physics Lab I - SL	
PHYS 222 Fundamentals of Physics II - S	4
& PHYS 224 Fundamentals of Physics Laboratory II - SL	
Minimum Electives ^{6,7}	4-6
Minimum Total Hours	75-77

Requirements for graduation include:

- Completion of PSYC 302 with a minimum grade of C
- A minimum grade of C-minus in all courses used to meet departmental requirements in the Psychology major
- A minimum GPA of 2.0 in Psychology (PSYC) coursework

Only 60 hours in the major department may be applied toward the Bachelor of Science degree.

At least 50 of the total minimum hours required must be at the 300 level or above.

Code	Title	Hours
Culminating Undergraduate Experience (Graduation requirement)		
Requirement fulfilled by completing one of the following:		
PSYC 400	Psychology Research and Public Communication - CUE	
PSYC 407	Community Internships in Psychology - CUE	
PSYC 408	International Service Learning and Research - CUE	
PSYC 410	Giving Psychology Away: Critical Thinking and Public Communication - CUE	
PSYC 412	Modifying Behavior - CUE	
PSYC 415	Family Risk, Resilience and Mindfulness - CUE, WR	
PSYC 420	History of Psychology: A Socio-Cultural Perspective - CUE, WR	
PSYC 430	Psychology of Peace & Ethnic Relations - CUE	
PSYC 433	Music Perception and Cognition - CUE	
PSYC 440	Aging: Science and Stories - CUE, WR	
PSYC 444	Exploration of Self: Theory and Research - CUE, WR	
PSYC 485	Stress and Trauma - CUE, WR	
PSYC 492	Undergraduate Psychology Research - CUE	
PSYC 496	Honors Psychology Thesis - CUE, WR	

¹ Completion of the second semester of a single foreign language; hours will vary depending on the language taken

² In addition to courses counted toward Cardinal Core

- ³ May be incorporated into other degree requirements
- ⁴ Fulfills a Cardinal Core Requirement.
- ⁵ Students should confirm any substitute class with the department prior to enrollment. Students who substitute a statistics course from another department will need to take an additional Psychology elective to complete the required number of Psychology hours for the program.
- ⁶ At least 50 of the total minimum hours required for the degree must be at the 300 level or above.
- ⁷ Students who satisfy Cardinal Core Requirements by courses defined by the program will require additional electives to complete the minimum hours for the degree.
- ⁸ Or higher level course

Flight Plan

Course	Title	Hours
Year 1		
Fall		
GEN 100 or GEN 101	Student Success Center Orientation or Arts and Sciences Orientation	1
ENGL 101	Introduction to College Writing - WC	3
BIOL 240	Unity of Life - S	3
PSYC 201	Introduction to Psychology - SB	3
CHEM 201	General Chemistry I - S	3
CHEM 207	Introduction to Chemical Analysis I - SL	1
CHEM 208	Introduction to Chemical Analysis II - SL	1
Hours		15
Spring		
ENGL 102	Intermediate College Writing - WC	3
BIOL 242	Diversity of Life - S	3
BIOL 244	Principles of Biology Laboratory - SL	2
MATH 205	Calculus I - QR	4
CHEM 202	General Chemistry II - S	3
CHEM 209	Introduction to Chemical Analysis III	1
Hours		16
Year 2		
Fall		
PSYC 301	Statistics for Psychology	3
PSYC 305	Brain and Behavior	3
PSYC 306	Life Span Developmental Psychology	3
Foreign Language 1		3-4
General Education: Cardinal Core Oral Communication - OC		3
Hours		15-16
Spring		
PSYC 302	Research Methods for Psychology	3
PSYC 307	Cognitive Processes	3
PSYC 308	Abnormal Psychology	3
General Education: Cardinal Core Social & Behavioral Sciences Historical Perspective - SBH		3
Foreign Language 2		3-4
Hours		15-16
Year 3		
Fall		
PHYS 221	Fundamentals of Physics I - S	3
PHYS 223	Fundamentals of Physics Lab I - SL	1
General Education: Cardinal Core Arts & Humanities US Diversity - AHD1		3
Psychology elective		3
Psychology elective		3
Humanities or Natural Science elective (300 level or above)		3
Hours		16

Spring

PHYS 222	Fundamentals of Physics II - S	3
PHYS 224	Fundamentals of Physics Laboratory II - SL	1
General Education: Cardinal Core Arts & Humanities Global Diversity - AHD2		3
Psychology WR elective (300 level or above)		3
Psychology elective (300 level or above)		3
Humanities or Natural Sciences elective (300 level or above)		3
Hours		16

Year 4

Fall

Psychology elective (300 level or above)		3
Psychology WR elective		3
General elective		3
General elective		3
General elective		3
Hours		15

Spring

Psychology elective CUE		3
Psychology elective (300 level or above)		3
General elective (300 level or above)		3
General elective		3
General elective		1
Hours		13

Minimum Total Hours 121-123

Degree Audit Report

Degree Audit reports illustrate how your completed courses fulfill the requirements of your academic plan. What-if reports allow you to compare the courses you have completed in your current academic plan to the courses required in another academic plan. Should you have questions about either report, please consult with your academic advisor.

To create either report:

1. Log into your ULink account.
2. Click on the Student Services tab.
3. Next, click on "View my Academic Advisement Report" to run a Degree Audit report in the Undergraduate Advising area.
4. To create a What-if report, click on "Create a What-if Advisement Report."

Click here to run a Degree Audit report, or create a What-if report. (<https://ulink.louisville.edu>)

Flight Planner

Based on your major, the Flight Planner tool may be available for you to create a personalized Flight Plan. The Flight Planner can be found in the ULink Student Center. Consult with your advisor for assistance with the Flight Planner.